

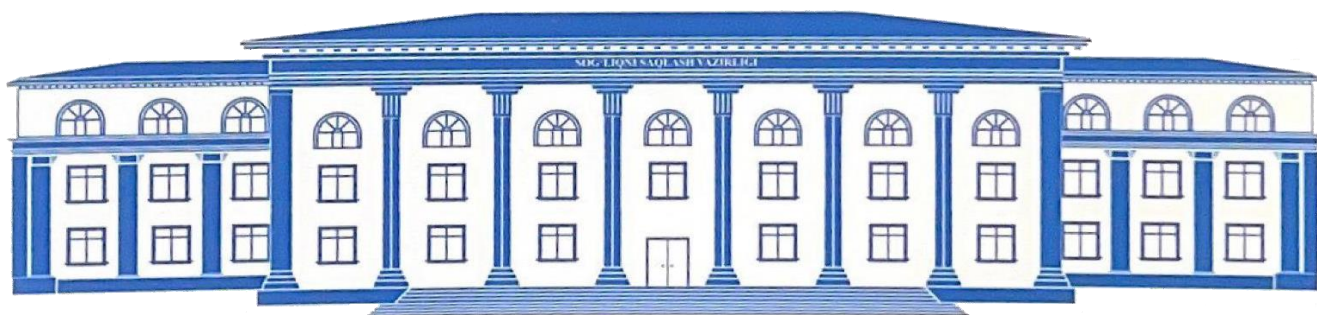
**O‘ZBEKISTON RESPUBLIKASI
SOG‘LIQNI SAQLASH VAZIRLIGI**

**MINISTRY OF HEALTH
OF THE REPUBLIC OF UZBEKISTAN**

Turkiston tibbiyot jurnali (1922 yy.), O'rta Osiyo tibbiyot jurnali (1925 yy.)



**O‘ZBEKISTON
TIBBIYOT JURNALI**



№ 6
Maxsus son
2025

O‘ZBEKISTON TIBBIYOT JURNALI

Медицинский журнал Узбекистана | Medical journal of Uzbekistan

ILMIY – AMALIY JURNALI

2025 №6

ISSN: 0025-830X

1922 yilning yanvaridan chiqa boshlagan

Ta’sischi – O‘zbekiston Respublikasi Sog‘liqni saqlash vazirligi

Jurnal O‘zbekiston Respublikasi matbuot va axborot agentligi tomonidan
2011 yil 12 mayda ro‘yxatga olingan (№138)

DUK “O‘zbekiston tibbiyot jurnali”
Toshkent 2025

BOSH MUHARRIR
Khudoyarov Asilbek Anvarovich

BOSH MUHARRIR O'RINBOSARI
Kamilov Haydar Pazilovich

MAS'UL KOTIB
Raximova Muhabbat Azzamat
qizi

TAHRIR HAY'ATI

Abdusamatov B.Z.	(O'zbekiston)	Mammadbayli A.	(Azerbaijan)
Akilov X.A.	(O'zbekiston)	Maxkamov K.E.	(O'zbekiston)
Alimov A.V.	(O'zbekiston)	Musabaev E.I.	(O'zbekiston)
Alyavi B.A.	(O'zbekiston)	Muxtorov Sh.T.	(O'zbekiston)
Aripova T.U.	(O'zbekiston)	Nadirxanova N.S.	(O'zbekiston)
Axmedova D.I.	(O'zbekiston)	Najmutdinova D.K.	(O'zbekiston)
Basitxanova E.I.	(O'zbekiston)	Norvapalo K.	(Finland)
Bassi F.	(Italy)	Nazirov F.G.	(O'zbekiston)
Baxromov S.M.	(O'zbekiston)	Parpieva N.N.	(O'zbekiston)
Carrasco D.G.	(Spain)	Pulatova D.Sh.	(O'zbekiston)
Choi Jae Wook	(Korea)	Raivo P.	(Finland)
Daminov B.T.	(O'zbekiston)	Riskiev U.R.	(O'zbekiston)
Ermatov N.J.	(O'zbekiston)	Rizaev J.A.	(O'zbekiston)
Fazilov X.G.	(O'zbekiston)	Rizaev K.S.	(O'zbekiston)
Gaffarov S.A.	(O'zbekiston)	Sabirov U.Yu.	(O'zbekiston)
Gafurov G.G.	(O'zbekiston)	Safoev B.B.	(O'zbekiston)
Gavrilova T.V.	(Rossiya)	Sergeeva N.	(Rossiya)
Gerasimova L.P.	(Rossiya)	Shadmanov A.K.	(O'zbekiston)
Hufnagel M.	(Germany)	Shayxova G.I.	(O'zbekiston)
Inoyatov A.Sh.	(O'zbekiston)	Sidikov A.A.	(O'zbekiston)
Inoyatova F.I.	(O'zbekiston)	Soatov T.S.	(O'zbekiston)
Irismetov M.E.	(O'zbekiston)	Sobirov J.M.	(O'zbekiston)
Iskandarov A.I.	(O'zbekiston)	Sokolovich N.A.	(Rossiya)
Iskandarov T.I.	(O'zbekiston)	Tadjiev B.M.	(O'zbekiston)
Islomov M.S.	(O'zbekiston)	Teshaev Sh.J.	(O'zbekiston)
Ismailov U.S.	(O'zbekiston)	Tillyashayxov M.N.	(O'zbekiston)
Ismoilov S.I.	(O'zbekiston)	Tulyaganov D.B.	(O'zbekiston)
Isroilov R.I.	(O'zbekiston)	Turaev F.F.	(O'zbekiston)
Kariev G'.M.	(O'zbekiston)	Tuychiev L.N.	(O'zbekiston)
Karimov Sh.I.	(O'zbekiston)	Ubaydullaev A.M.	(O'zbekiston)
Karimov X.Ya.	(O'zbekiston)	Xakimov M.Sh.	(O'zbekiston)
Kim Chen Wo	(Korea)	Xaydarov N.Q.	(O'zbekiston)
Komilov X.M.	(O'zbekiston)	Xodjibaev A.M.	(O'zbekiston)
Kostadinov D.	(England)	Xodjibekov M.X.	(O'zbekiston)
Kramer M.	(Germany)	Yüksel Özkan	(Turkey)
Kuldjanov D.	(USA)	Yusupaliev B.K.	(O'zbekiston)
Kurbanov R.D.	(O'zbekiston)	Yusupov A.F.	(O'zbekiston)
Madazimov M.M.	(O'zbekiston)	Zuccotti G.V.	(Italy)
Makieva K.B.	(Кыргызстан)	Zufarova Sh.A.	(O'zbekiston)



DUK "O'zbekiston tibbiyot jurnali"

100047, Toshkent shahri, Mahtumkuli ko'chasi 103, 4.

Tel.: +99871 289 14 57

www.dukmedjournal.uz

Toshkent davlat tibbiyot universiteti



**IV -ilmiy-amaliy xalqaro anjuman
to'plami**

**“Zamonaviy
pediatriyaning
dolzarb
muammolari:
bolalar
kasalliklari
diagnostikasi va
davosining
yangi
imkoniyatlari”**

28-29 noyabr, 2025 y.

ОГЛАВЛЕНИЕ – МУНДАРИЖА

ОГЛАВЛЕНИЕ – МУНДАРИЖА

КЛИНИЧЕСКАЯ МЕДИЦИНА

- Керимова М.К., Султанова Н.С., Авезова Г.С.** / Роль хламидийной инфекции у детей с респираторными инфекциями19
- Rixsiyeva N.T.** / Gestatsion birlamchi giperparatireoz bilan og'rigan xomilador ayollar hayot sifati va kognitiv funksiyalarini baholash22
- Tashmatova G.A., Xalilova Z.A.** / Atipik infeksiyalar bilan bog'liq bronxial astmada probiotik terapiyaning samaradorligini baholash26
- Bobomuratov T.A., Sulstonova N.S., Sa'dullayev S.U., Abdurasulova T.R.** / Pubertat davridagi bolalarda klinik va metabolik asoratlar31
- Rabbimova D.T., Shavridova G.M.** / Antibiotik bilan bog'liq diareyalarning erta yoshdagi bolalarda klinik-laborator xususiyatlari36
- Алявия М.Н.** / Связь факторов роста IGF-1 и IGFBP-3с нутритивным статусом у детей с муковисцидозом42
- Азизова Н.Д., Андапулатов А.А., Шамсиев Ф.М., Ахмадалмева Н.О., Абдуллаева Д.Г.** / Клиническое течение и питание детей с врожденными пороками сердца при внебольничной пневмонии48
- Вахриев В.Р.** / Ishemik insultda buzilgan harakat funksiyasini tiklash uchun reabilitatsiya chora-tadbirlarini optimallashtirish.....54
- Vafoyeva G.R.** / Clinical and immunological description of epileptic encephalopathy in early childhood and development of criteria for its early diagnosis62
- Каримджанов И.А., Миррахимова М.Х., Газиева А.С.** / Клинико-лабораторные изменения сердечно-сосудистой системы при острых пневмониях у детей69
- Bobomuratov T.A., Tursunbaev A.K., Karimova N.A.** / Bolalarda POST-COVID sindromining namoyon bo'lishi75
- Tursunbaev A.K., Karimova N.A.** / Kallikrein-kinin tizimi, surunkali glomerulonefritda proteaza ingibitorlari.....82
- Каримова З.Ш., Агзамова Ш.А.** / Нутритивный статус и состояние здоровья детей дошкольного возраста, родившихся недоношенным.....86
- Кошимбетова Г.К., Шамансурова Э.А.** / Функциональные нарушения органов пищеварения у детей91
- Разикова Г.Р.** / Эффективность персонализированного алгоритма лечения пациентов с атопическим дерматитом95

9. Corea F., Silvestrelli G., Baccarelli A., и др. Reperfusion strategies in ischemic stroke: State of the art and future perspectives // *Cerebrovascular Diseases*. – 2017. – Т. 43, №1–2. – С. 43–51.
10. European Stroke Organisation. ESO Guidelines on Stroke Rehabilitation // *Stroke Journal*. – 2020.
11. Tiozzo E., Baker J. Physical activity and post-stroke rehabilitation // *Journal of Stroke and Cerebrovascular Diseases*. – 2016. – Vol. 25, №4. – P. 887–895.
12. Ward A.B. A summary of spasticity management: a treatment algorithm // *European Journal of Neurology*. – 2008. – Т. 15, №1. – С. 89–93.

UDC: 616.831-053:616-073

CLINICAL AND IMMUNOLOGICAL DESCRIPTION OF EPILEPTIC ENCEPHALOPATHY IN EARLY CHILDHOOD AND DEVELOPMENT OF CRITERIA FOR ITS EARLY DIAGNOSIS.

Vafoeva Gulchiroykhon Rustam kizi – 2nd-year PhD student, Department of Neurology, Child Neurology and Medical Genetics, Tashkent State Medical University

Objective. To develop preventive strategies for early neurological disability based on the study of clinical and paraclinical characteristics of epileptic encephalopathy in early childhood.

Materials and methods. The study included 82 children aged 0–3 years with various forms of epilepsy, among whom 39 were newly diagnosed cases. The patients were divided into two groups: Group 1 — children with epileptic encephalopathy; group 2 — 47 children with other forms of epilepsy (comparison group). The control group consisted of 20 healthy volunteers. The research applied general clinical and neurological examination, the Bayley III neurodevelopmental assessment scale, and instrumental methods (EEG, MRI).

Conclusion. The obtained results allowed the development of criteria for early diagnosis of epileptic encephalopathy and its differentiation from other epilepsy forms. Immunological markers — interleukin-1 (IL-1), interleukin-10 (IL-10), and tumor necrosis factor alpha (TNF- α) — and their association with clinical features were analyzed. Based on the findings, scientific and practical recommendations were proposed to improve the effectiveness of early diagnosis and treatment.

Keywords: epileptic encephalopathy, seizures, West syndrome, Lennox–Gastaut syndrome

Maqsad. Erta bolalik davrida epileptik ensefalopatiyaning klinik-paraklinik xususiyatlarini o'rganish asosida erta nevrologik nogironlikning oldini olish choralarini ishlab chiqish.

Material va usullar. Tadqiqotda 0 yoshdan 3 yoshgacha bo'lgan epilepsiyaning turli shakllari bilan kasallangan 82 nafar bemor bolalarni tanlab oldik, jumladan 39 nafarida kasallik birinchi marotaba aniqlangan. Bemorlarni 2 guruhga bo'lib oldik: 1-guruh epileptik ensefalopatiya bilan kasallangan, 2-guruh epilepsiyaning boshqa shakllari bo'lgan 47 nafar bemor bolalardan (taqqoslov guruhi) tashkil topgan. Nazorat guruhi 20 nafar sog'lom ko'ngillilardan iborat edi. Tadqiqotda umumiy klinik, nevrologik, neyropsixologik rivojlanishini baholash shkalasi (Beyli III) va instrumental tadqiqot usullaridan (EEG, MRT) foydalanildi.

Xulosa. Olingan natijalar Tadqiqot doirasida epileptik ensefalopatiyani erta tashxislash va uni epilepsiyaning boshqa shakllaridan differensial tashxis qilishga imkon beruvchi mezonlar ishlab chiqildi. Immunologik ko'rsatkichlar — interleykin-1 (IL-1), interleykin-10 (IL-10), o'sma nekroz omili alfa (TNF- α) darajalari hamda ularning klinik belgilar bilan o'zaro bog'liqligi tahlil qilindi. Olingan natijalar asosida erta tashxislash va davolash samaradorligini oshirish bo'yicha ilmiy-amaliy tavsiyalar ishlab chiqildi.

Kalit so'zlar. epileptik ensefalopatiya, tutqanoq, Vesta sindromi, Lennokso-Gasto sindromi

Цель. На основе изучения клинико-параклинических особенностей эпилептической энцефалопатии раннего детского возраста разработать меры по профилактике ранней неврологической инвалидизации.

Материалы и методы. В исследование были включены 82 пациента в возрасте от 0 до 3 лет с различными формами эпилепсии, из них у 39 заболевание было выявлено впервые. Пациенты были разделены на 2 группы: 1-я группа — дети с эпилептической энцефалопатией; 2-я группа — 47 детей с другими формами эпилепсии (сравнительная группа). Контрольную группу составили 20 здоровых добровольцев. В исследовании использованы общеклинический и неврологический осмотр, шкала оценки нейropsychологического развития (Bailey III), а также инструментальные методы (ЭЭГ, МРТ).

Заключение. Полученные результаты позволили разработать критерии ранней диагностики эпилептической энцефалопатии и её дифференциации от других форм эпилепсии. Изучены иммунологические показатели — уровни интерлейкина-1 (IL-1), интерлейкина-10 (IL-10), фактора некроза опухоли альфа (TNF- α) и их взаимосвязь с клиническими проявлениями. На основе результатов предложены научно-практические рекомендации по повышению эффективности ранней диагностики и лечения.

Ключевые слова: эпилептическая энцефалопатия, судороги, синдром Веста, синдром Леннокса–Гасто

Introduction. Epilepsy is one of the most common disorders in child psychoneurology, as 70% of cases occur during early childhood and adolescence, reaching its peak in the first months of life [1]. The highest incidence is observed during the first year of life, with 120 cases per 100,000 population. By the age of 10, the incidence decreases to 40–50 per 100,000, and during adolescence it drops to 20 per 100,000 [2]. In 29% of cases, epilepsy manifests before the age of 3, with a prevalence ranging from 5 to 10 per 1,000 children [3,4]. Other studies report rates between 1.5 and 50 per 1,000, with an average of 15 per 1,000 [5]. It is also known that epilepsy and epileptic seizures are more frequently observed in males [6].

Early childhood epileptic encephalopathy (EE) is a severe pathological condition that significantly impairs neurological development. Patients present with frequent seizures, neurological deterioration, and a decline in cognitive and motor functions. Developing effective clinical and immunological criteria for early diagnosis is crucial to prevent the severe consequences of this condition. Furthermore, the study of immunological markers (IL-6, IL-10, TNF- α) and their role in disease progression increases the scientific relevance of this research.

Objective of the study. To investigate the clinical and immunological characteristics of early childhood epileptic encephalopathy and to analyze the course of the disease.

Materials and Methods. This study was conducted at the Neurology Department of the National Children's Medical Center. A total of 82 children aged 0 to 3 years with various forms of epilepsy were examined. Among them, epilepsy was diagnosed for the first time in 39 patients.

The patients were divided into the following groups:

- Group 1 (main group): 35 children (42.7%) diagnosed with epileptic encephalopathy.
- Group 2 (comparison group): 47 children (57.3%) with other forms of epilepsy, including focal epilepsy (35 patients, 42.7%) and generalized epilepsy (12 patients, 14.6%).
- Control group: 20 healthy volunteers.

Clinical, neurological, and neuropsychological assessments were performed using the Bayley Scales of Infant and Toddler Development, Third Edition (Bayley III). Instrumental diagnostic methods included electroencephalography (EEG) and magnetic resonance imaging (MRI). Immunological parameters were assessed by measuring serum levels of cytokines: interleukin-1 (IL-1), interleukin-10 (IL-10), and tumor necrosis factor-alpha (TNF- α).

Results. The distribution of epileptic encephalopathy syndromes in the main group was as follows:

- West syndrome — 20 patients (57.1%)
- Lennox-Gastaut syndrome — 4 patients (11.4%)
- Landau-Kleffner syndrome — 3 patients (8.6%)
- Dravet syndrome — 3 patients (8.6%)
- Ohtahara syndrome — 2 patients (5.7%)
- Electrical status epilepticus in slow-wave sleep (ESES) — 2 patients (5.7%)
- Early myoclonic encephalopathy — 1 patient (2.9%)

These data are illustrated in Figure 1.

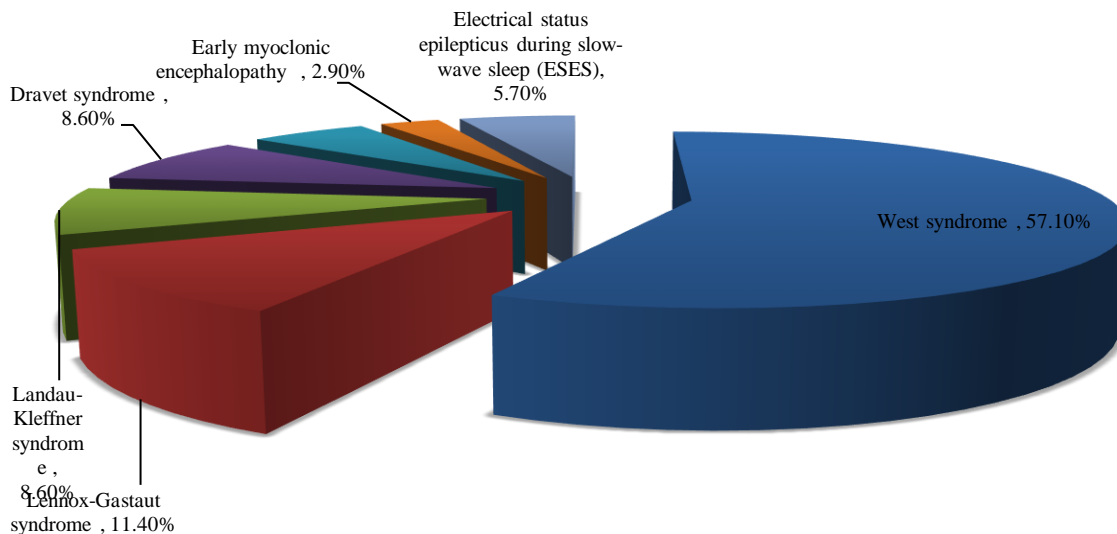


Figure 1. Analysis of various clinical syndromes of epileptic encephalopathy

From the above figure, it can be seen that among all forms of epileptic encephalopathy in children, West syndrome shows the highest prevalence rate, accounting for 57.1% of cases.

Age distribution of children. According to age indicators, the children were divided into four groups:

- Group 1: from birth to 6 months – 15 children (18.3%);
- Group 2: from 6 to 12 months – 23 children (28%);
- Group 3: from 12 to 24 months – 34 children (41.5%);
- Group 4: from 24 to 36 months – 10 children (12.2%).

These results are presented in Figure 2.

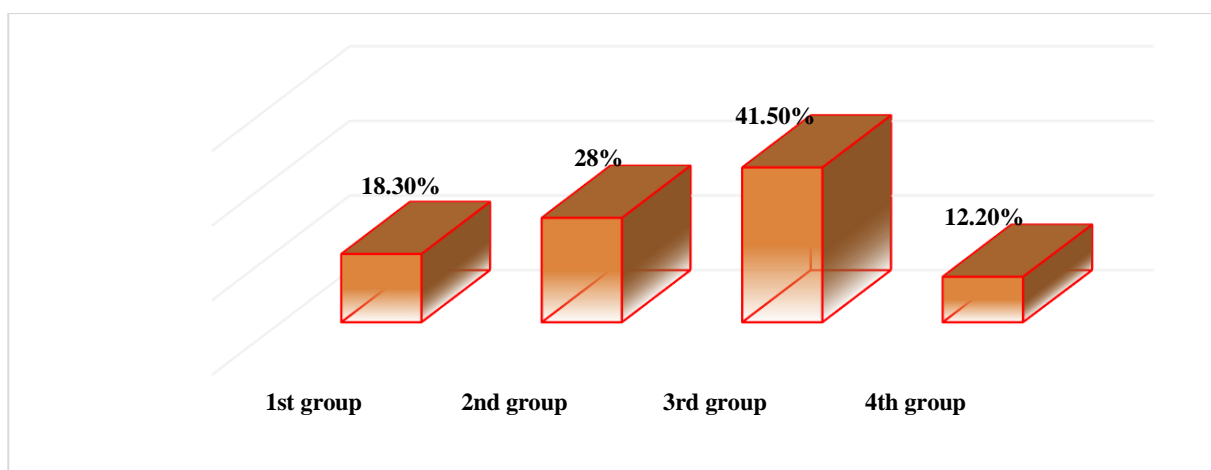


Figure 2. Distribution of the examined children by age group

A predominance of male children compared to females was observed. Boys accounted for 51 cases (62.1%), while girls represented 31 cases (37.9%). It should be noted that in the group of children with epileptic encephalopathy, boys constituted 19 cases (54.3%). Thus, the male-to-female ratio was 1,7:1.

Clinical characteristics

The clinical characteristics included the following criteria: identification of etiological factors, description of seizure semiology, assessment of the evolutionary dynamics of epileptic seizures, evaluation of psychomotor developmental delay, and comparison of disease onset with other clinical presentations. In addition, in the main group, such factors as the course of pregnancy in the mother and the condition of the child during the neonatal period were also considered. These data are summarized in Table 1.

Table 1.

Distribution of anamnestic indicators in the main group of children

Indicators	Yes		No	
	abs	%	abs	%
Presence of miscarriage risk	15	42.8	20	57.2
Family history of epilepsy	2	5.7	33	94.3
Consanguineous marriages	3	8.6	32	91.4
Neonatal seizures	5	14.3	30	85.7
Depression	17	48.6	18	51.4
Severe gestosis	7	20	28	80

The analysis of this table indicates that in children with epileptic encephalopathy, the prevalence of risk factors such as threatened miscarriage, severe gestosis, and neonatal depression was significantly higher.

The etiological factors contributing to the development of early childhood epileptic encephalopathy were diverse, with prenatal factors playing the leading role. Among them, congenital malformations of the central nervous system (CNS) were predominant, including

pachygyria, lissencephaly, and focal cortical dysplasia (FCD).

Table 2.

Frequency of etiological factors in the occurrence of epileptic encephalopathy in early childhood

Etiological factors	Children		Etiological factors	Children	
	abs	(%)		abs	(%)
Congenital malformations of the CNS	8	22.8	Organic brain changes	6	17.1
Neurocutaneous syndromes	1	2.9	Hypoxic-ischemic encephalopathy	7	20
Tuberous sclerosis complex	4	11.4	Consequences of intrauterine infections	6	17.1
Chromosomal aberrations	1	2.9	Consequences of neuroinfections	3	8.6
Metabolic disorders	2	5.7	Acute cerebrovascular complications	1	2.9
Aicardi syndrome	1	2.9	Congenital tumor	1	2.9

According to the analysis of Table 2, the main etiological factors were prenatal conditions, which accounted for 59.4% of cases.

When analyzing the neurological status, the following general neurological signs are observed: sleep disturbance, severe headache, dizziness, rapid fatigue; focal neurological signs: signs of BMN damage, unilateral hyperreflexia of tendon reflexes, anisotonia, presence of pathological reflexes, dysmetria were observed (Fig. 3).

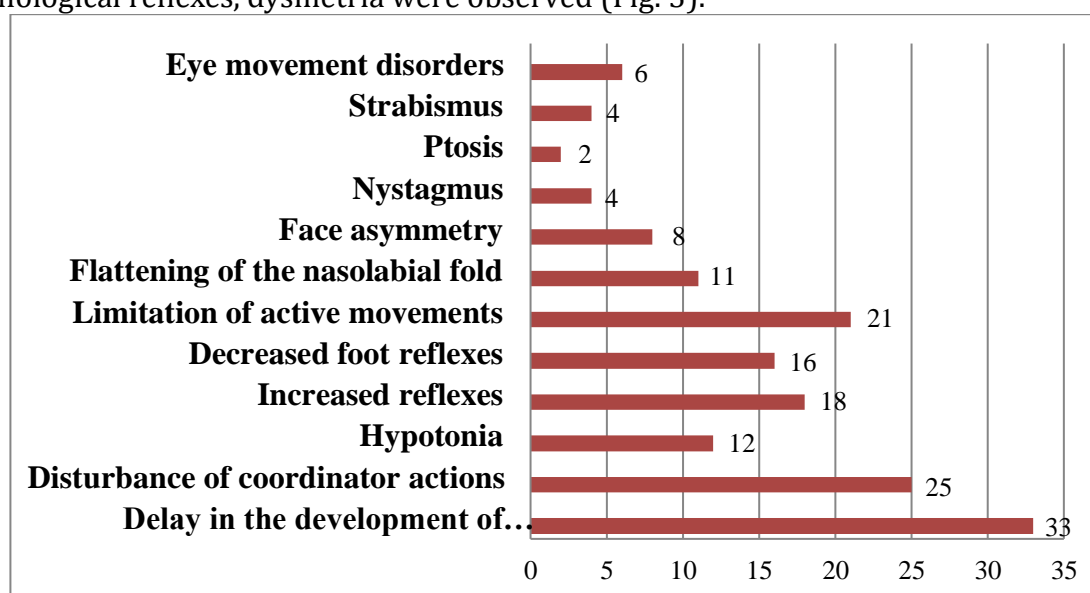


Figure 3. Neurological changes in children in epileptic encephalopathy.

Significant differences were observed in the characteristics of epileptic seizures between the main and comparison groups, while no seizures were recorded in the control group. In the

main group, the most frequent type of seizure was epileptic spasms, detected in 23 cases (65.8%). Other types included:

- Generalized tonic-clonic seizures — 3 cases (8.6%)
- Myoclonic seizures — 3 cases (8.6%)
- Polymorphic seizures — 2 cases (5.7%)
- Absence seizures — 2 cases (5.7%)
- Focal seizures — 1 case (2.8%)
- Non-convulsive variants — 1 case (2.8%)

In the comparison group, the distribution differed substantially:

- Generalized tonic-clonic seizures were most common, recorded in 22 patients (46.8%)
- Polymorphic seizures — 8 cases (17%)
- Focal seizures — 11 cases (23.4%)
- Infantile spasms — only 3 cases (6.4%) (a marked difference compared to the main group)
- Absence seizures — 2 cases (4.3%)
- Myoclonic seizures — 1 case (2.1%)

Immunological findings

To evaluate immunological parameters in the studied groups, cytokine profiling was performed. In particular, the serum levels of IL-1 β , IL-6, IL-10, and TNF- α were measured, and significant differences were observed in children with epileptic encephalopathy (EE).

The results demonstrated that IL-1 β , IL-6, and TNF- α levels were markedly elevated in EE patients, while IL-10 concentrations were reduced. This indicates enhanced inflammatory activity along with suppressed anti-inflammatory immune responses. Compared with the control group, all parameters showed statistically significant differences ($p < 0.01$).

- In Group 1, the mean IL-1 β level was 28.4 ± 4.7 pg/ml, significantly higher than in Group 2 (19.1 ± 3.2 pg/ml) and the control group (10.6 ± 2.4 pg/ml) ($p < 0.05$).
- The IL-10 level in Group 1 was 6.2 ± 1.1 pg/ml, indicating weakened anti-inflammatory defense mechanisms.

From a biological perspective, IL-1 β is secreted by astroglia and microglia, disrupting neuronal activity and inducing synaptic imbalance that triggers epileptic seizures. IL-6 promotes later stages of inflammation and contributes to blood-brain barrier impairment. TNF- α exhibits proapoptotic and proconvulsive properties, and its elevated concentration increases neuronal death in epileptogenic zones. Reduced IL-10 reflects deepened immune imbalance and weakened antiepileptic immune defense, since IL-10 normally suppresses the activity of IL-1 β and TNF- α .

Conclusion.

1. Epileptic encephalopathies in children aged 0–3 years predominantly manifest as severe clinical forms, most commonly West syndrome (57.1%). The disease is more frequent in boys (male-to-female ratio 1.7:1) and is characterized by profound psychomotor developmental delay, epileptic spasms, and refractory seizures. Paraclinical examinations revealed hysarrhythmia, burst-suppression patterns, brain atrophy, and ventriculomegaly.

2. Immunological investigations showed that children with EE had significantly elevated pro-inflammatory cytokines (IL-1 β , IL-6, TNF- α), while IL-10 levels were reduced. This confirms the presence of active neuroinflammatory processes in the central nervous system and weakened anticonvulsive immune protection. IL-1 β and TNF- α correlated positively with seizure severity, whereas IL-10 correlated negatively ($r = +0.51$ and $r = -0.60$).

3. Integration of clinical, EEG, MRI, and immunological data can serve as an effective approach for early diagnosis of EE, detection of refractory forms, prognosis, and the development of personalized therapy. Cytokine profiling, in particular, may be applied in clinical

practice as a diagnostic and prognostic biomarker.

References.

1. Guerrini, R., et al. (2018). "Neuroimaging in epileptic encephalopathies." //Pediatric Neurology, 89, 10–18.
2. Hirsch, E., et al. (2020). "Emerging biomarkers for epileptic encephalopathy." //Brain, 143(1), 20–28.
3. Howell, K. B., et al. (2018). "Epileptic encephalopathy: Use of genetic testing to guide treatment." // The Lancet Neurology //, 17(6), 539–550.
4. Hughes, J. R. (2020). Review of EEG findings in epileptic encephalopathies. //Clinical EEG and Neuroscience, 51(1).
5. Sadleir, L. G., & Scheffer, I. E. (2021). "Epileptic encephalopathy in infancy and early childhood." //Epilepsia, 62(6), 1237–1250.
6. Scheffer, I. E., et al. (2017). "ILAE classification of the epilepsies: Position paper of the ILAE Commission for Classification and Terminology." "Epilepsia", 58(4), 512–521. Kwong K., Chak W.K., Kwan S.N. Epidemiology of childhood epilepsy in a cohort of 309 Chinese children // J. Pediatr Neurol. – 2001. – Vol. 24. – P. 276-282.
7. Shields, W. D. (2020). Lennox-Gastaut syndrome: Update and innovative approaches to therapy. //Epilepsy Research, 162.
8. Specchio, N., & Pietrafusa, N. (2022). Advances in understanding early childhood epileptic encephalopathy and its genetic underpinnings. //Brain Communications, 5(5).
9. Symonds, J. D. et al. (2021). Epileptic and developmental encephalopathies in childhood: Diagnostic progress and challenges. //Epilepsy Currents, 21(4).
10. Tang, S., et al. (2020). "Electroencephalographic patterns in early-onset epileptic encephalopathies." //Clinical Neurophysiology//, 131(8), 1939–1947.
11. Trinka, E., & Kälviäinen, R. (2017). "Epileptic encephalopathies: Bridging the gap between clinical features and mechanisms of disease." //Epilepsy & Behavior//, 69, 3–7.